



# **EU T+1 Securities Settlement Handbook**

**3 February 2026**

## Chairman's Foreword

The transition of European securities markets to a T+1 settlement cycle represents one of the most significant structural changes to the EU post-trade landscape in recent decades. It is a reform driven by a clear objective: to enhance settlement efficiency, reduce systemic risk, and strengthen the resilience and global competitiveness of Europe's capital markets.

Following the publication of the High-Level Roadmap by the EU T+1 Industry Committee, it became evident that market participants would benefit from additional, practical guidance to support implementation. This Handbook has therefore been developed as a structured and pragmatic companion to the Roadmap. Its purpose is to translate high-level recommendations into actionable operational guidance across the full securities lifecycle.

The European context is uniquely complex. Unlike jurisdictions with a single market infrastructure and regulatory authority, the EU transition to T+1 must accommodate multiple currencies, settlement systems, legal frameworks and market practices across 27 Member States and more than 30 central securities depositories. There is no single template that can simply be imported. This Handbook recognises that reality and deliberately avoids a one-size-fits-all approach. Instead, it provides example-based guidance, highlights best practices, and identifies key operational dependencies, while allowing firms to adapt implementation to their specific business models and market structures.

The Handbook has been produced through extensive collaboration across the industry, involving market participants, financial market infrastructures, service providers and trade associations. It reflects the work of multiple dedicated technical workstreams and incorporates insights from jurisdictions that have already transitioned to T+1, while remaining firmly grounded in European regulatory and operational requirements.

Successful implementation will depend not only on individual firm readiness, but also on coordinated action across the settlement chain. Early preparation, increased automation, improved data quality, and greater standardization of processes will be essential. Just as importantly, open communication and continued engagement between market participants and authorities will be critical to identify and address challenges as they arise.

This Handbook is not intended to be static. As further guidance, regulatory clarifications and market practices are developed, it will be supplemented by additional materials published by the EU T+1 Industry Committee and its workstreams. Market participants are encouraged to use this Handbook as a reference point, to engage actively in ongoing industry efforts, and to begin implementation planning well in advance of the October 2027 go-live date.

I would like to thank the Technical Workstream Co-Leads, the Secretariat and all contributors for their time, expertise and commitment. Through collective effort and disciplined execution, we are confident that the European market can deliver a successful transition to T+1, reinforcing the safety, efficiency and integrity of EU securities markets for the long term.

Giovanni Sabatini

A handwritten signature in black ink, appearing to read "Giovanni Sabatini".

# Contents

- Chairman's Foreword ..... 1
- 1. Introduction ..... 4
  - 1.1. Scope of the Handbook ..... 4
  - 1.2 Purpose and Supporting Resources ..... 4
- 2. Operational Timetable ..... 5
- 3. Affected Business Tasks ..... 10
  - 3.1. Trading ..... 10
  - 3.2. Matching and Confirmation ..... 11
    - 3.2.1. Key implementation factors ..... 11
    - 3.2.2. Objectives and expected deliverables ..... 12
    - 3.2.3. Specific Considerations and Examples ..... 12
  - 3.3. Clearing ..... 13
    - 3.3.1. Rational ..... 13
    - 3.3.2. Helpful practices ..... 13
    - 3.3.3. Specific considerations and examples ..... 14
  - 3.4. Settlement ..... 15
    - 3.4.1. Rational ..... 15
    - 3.4.2. Model: Current vs future ..... 16
    - 3.4.3. Key implementation factors ..... 21
    - 3.4.4. Timeline and Milestones ..... 23
    - 3.4.5. Objectives and expected deliverables ..... 25
    - 3.4.6. Specific Considerations and Examples ..... 27
  - 3.5. Asset Management ..... 29
    - 3.5.1 Context ..... 29
    - 3.5.2 Model: Current vs future ..... 29
    - 3.5.3 Key implementation factors ..... 30
    - 3.5.4 Timeline and milestones ..... 31
    - 3.5.5 Objectives and expected deliverables ..... 31
    - 3.5.6 Specific Considerations and Examples ..... 32
  - 3.6. FX ..... 32
    - 3.6.1. Overview of findings: ..... 32

3.6.2. Relevant documents produced: .....	34
3.6.3. Conclusion:.....	34
3.7. Corporate Events .....	35
3.7.1. Rational .....	35
3.7.2. Model: Current vs future .....	35
3.7.3. Key implementation factors .....	39
3.7.4. Timeline and milestones.....	42
3.8. SFT .....	42
3.8.1. Context .....	42
3.8.2. Additional guidance on specific issues: .....	43
2.8.3. Relevant industry best practices .....	44
4.9. Legal and Regulatory .....	45
4.9.1. Purpose .....	45
4.9.2. Objectives and considerations going forward .....	45
4.9.2.3 <i>Considering shortening the SEPA Direct Debit Core</i> .....	46
5. Conclusion .....	47
6. Appendix: .....	48
6.1. Table of Acronyms: .....	48

# 1. Introduction

## 1.1. Scope of the Handbook

Following the publication of the High-Level Road Map by the EU T+1 Industry Committee, which provides recommendations to support the transition to a shorter settlement cycle and enhanced settlement discipline, this handbook has been developed as a structured implementation guide aligned with that roadmap. Its purpose is to facilitate consistent understanding and execution across stakeholders, ensuring readiness for key milestones and full compliance with the relevant applicable regulatory requirements defined by ESMA in the updated [Final Report On Amendments to the RTS on Settlement Discipline](#)<sup>1</sup>.

Unlike the U.S. Playbook, this handbook differs fundamentally in both scope and format, focusing on the unique characteristics of European market practices and regulatory expectations. It is critical to dispel the misconception that the EU transition will mirror the U.S. experience. The U.S. Playbook is designed for a single, unified market with one central CSD (DTCC), a single currency (USD), and a centralized regulatory framework under the SEC, which allows for a standardized approach. In contrast, the EU transition to T+1 must address a much higher level of complexity: it spans 27 distinct markets and 31 CSDs, operates in a multi-currency environment, and involves fragmented settlement systems, diverse regulatory frameworks, and significant time zone challenges. The EU also faces the need to harmonise practices across a wide range of local infrastructures, legal systems, and market conventions, whereas the US Playbook can rely on a more homogeneous environment. As a result, this handbook provides flexible, example-based guidance and references to best practices, rather than a one-size-fits-all solution.

The High-Level Road Map is already comprehensive and does not require further integration. The only addendum to the roadmap has been released and published on the website, reflecting the deep-dive analyses carried out by the three dedicated task forces: [Partial Settlement, Standard Settlement Instructions \(SSI\), and Securities Financing Transactions \(SFT\)](#).

## 1.2 Purpose and Supporting Resources

The handbook serves as a practical reference to support the industry's transition to the amended settlement discipline framework. Its primary objective is to provide actionable guidance that helps firms adhere to T+1 recommendations effectively and consistently. This

---

<sup>1</sup> Subject to European Commission review and European Parliament and Council non-objection

includes practical examples, references to best practices, and links to external relevant documents produced by recognized industry bodies.

The handbook complements and expands on the [FAQ section of the EU T+1 Industry Committee website](#), offering deeper insights and practical advice. As the EU T+1 Industry Committee continues their work, it will be complemented by additional material released on a timely basis whenever needed, ensuring that firms have access to updated guidance and resources to support full compliance with T+1 requirements.

In addition, as automation and standardisation are essential for a smooth changeover to T+1, the Industry Committee invites all relevant parties to comply with existing market standards such as the SCoRE standards delivered by the Advisory Group on Market Infrastructures for Securities and Collateral (AMI-SeCo).

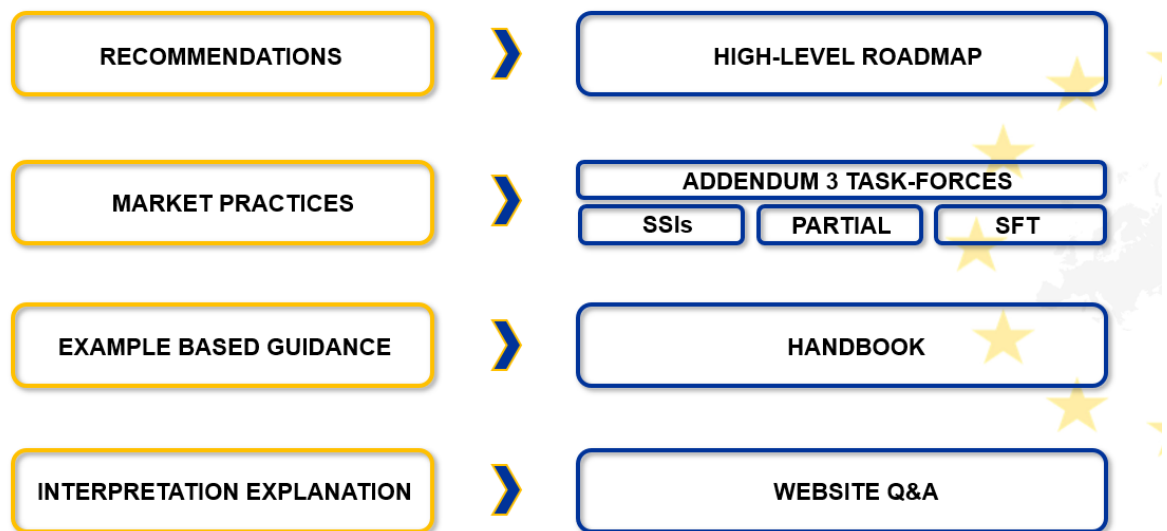


Figure 1: Resources for Market Participants

## 2. Operational Timetable

**Recommendation 2: This relates to the CCP end-of-day (EOD) process and recommends that CCPs should include trades executed before 22:00 in their EOD netting (where applicable for cleared markets)**

- The recommendation is driven by Recommendation 5 on Settlement Instructions (SIs): To be included in night batches, SIs should be submitted to Securities Settlement Systems (SSS) by 23:59 on Trade Date (TD)
- The recommendation to start securities settlement systems by 0:00 on settlement date and in particular one feature of the T2S overnight settlement (C1S4). This feature prioritizes the settlement of CCP transactions before starting to allocate settlement

resources to OTC transactions. This ensures a maximum likelihood that resources available at the start of the day are used to settle CCP settlements. This model is considered important by the CCPs clearing equity and ETF cash market transaction to reduce the likelihood of settlement fails to the CCP at the end of the day.

- **Practically:** Trades executed after 22:00 CET could still be processed through additional arrangements put in place between trading venues and CCPs, either on a gross basis or by CCPs choosing to put in place extra netting runs, although this would obviously reduce the netting efficiency.

### **Recommendation 3: CCPs should release EOD netting reports and input settlement instructions by 22:30 on TD**

- CCPs are expected to need around 30 minutes to close their end-of-day operational processes with trading venues, calculate their net settlement obligations and generate their end-of-day netting reporting to their clearing members and settlement agents.
- **Practically:** This allows 60 minutes for Clearing Members and Settlement Agents to reconcile their CCPs netting reports, allocate resources, send settlement instructions for both their CCP transactions and any associated OTC transactions to their custody and settlement intermediaries ahead of the start of securities settlement systems.

### **Recommendation 4: Allocations & Confirmations must be completed as soon as possible, and no later than 23:00 on TD**

- **Practically:** The trade confirmations and allocations between buy-side firms and their executing brokers should be completed continuously throughout the day and at the latest by 23:00. This allows 30' for the sending of the final settlement instructions by buy-side firms and executing brokers to their custody and settlement intermediaries ahead of the start of securities settlement systems.
- This recommendation differs deliberately from the UK deadline of 23.59 because in the UK, securities settlement does not start until 06:00 whereas in the EU, securities settlements operate during the night.

### **Recommendation 5: Settlement Instructions (SIs) - To be included in night batches, SIs should be submitted to Securities Settlement Systems (SSS) by 23:59 on TD**

- **Practically:** Best practice is that Buy-side firms and executing brokers should instruct settlement continuously throughout the trading day, facilitating intra-day exception management of any settlement matching issues on TD. At the latest, the recommended best practice is that settlement instructions should be submitted to Securities Settlement Systems (SSSs) by 23:59 on TD.
- Settlement instructions received by securities settlement systems after the deadline of 23:59 on TD will settle during the next available settlement sequence. As it may prove impossible for buy-side firms in out-of-region (non-Europe) time-zones to meet the best practice deadlines of this Recommendation, alternative measures may need to be

established between these institutions and their local (in Europe) custodians, intermediaries and counterparties.

**Recommendation 6: Start of Settlement: SSSs should open for settlement at the latest by 00:00 and C1S4 batch settlement process at TARGET2-Securities (T2S) should run at 00:00, with the same priority order as today**

- **Practically:** It is considered important that securities settlement systems should start no later than 0:00 on settlement day to allow the maximum time for settlement. From a T2S perspective, two key timings are the T2S C1S4 event and C2S4. The recommendation is to start these events at 00:00 and 02:00 (considering, where possible, the time needed for market participants to receive reporting from C1S4 and react accordingly). These events run ahead of the T2S Real Time Settlement process.
- Some non-T2S CSDs may not be able to start settlement as early as 00:00 due to local market arrangements, e.g. central bank opening hours.

**Figure 1: Current opening times for various EU (I)CSDs**

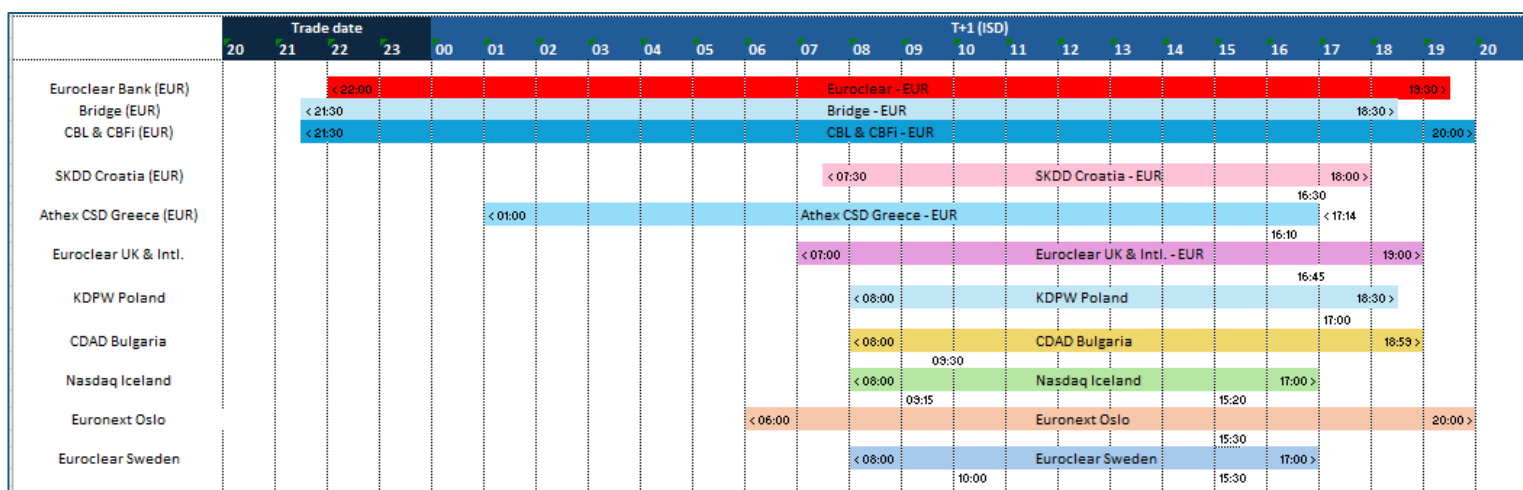


Table 1: CSD cut off times that reflect the current known information at the time of publication and may be subject to change ahead of T+1 implementation. Source: European Central Securities Depository Association (ECSDA)

**SFT Gating Event**

- The final report of the SFT settlement optimization workstream contains the detailed specifications for the new agreed ‘gating event’ which is going to be implemented by all the relevant EU CSDs.
- **Practically:** Trading parties/settlement participants that include the new “GATE” qualifier in their settlement instructions indicate that an instruction should settle as part of the gating event. This allows market participants to better coordinate SFT

instructions and optimize liquidity requirements in settlement systems during the real-time settlement activities.

**Recommendation 7: FX Transactions should be dealt with, processed and submitted to CLS by 00:00 on Settlement Date, to be included in the CLS settlement process**

- **Practically:** It is important that FX transactions are dealt, processed, and submitted to CLS no later than 00:00 on settlement day (SD,) to ensure their inclusion in the CLS settlement cycle. Timely submission helps mitigate settlement risk by enabling payment-versus-payment (PvP) settlement in CLS, which is critical for reducing principal risk in FX transactions.
- Market participants, whether submitting directly, through third-party service providers, or via custodians, should align their internal processing schedules to meet this deadline

**Recommendation 1: Stock Loan Recall Deadline**

- **Practically:** All market participants should adopt a standardised deadline for recall notification requests of 17:00 on TD-

**Recommendation 8: SL Recalls/New Loans - The return notification deadline should be set at 15:00 on Settlement Date; and Recommendation 9 - The best practice deadline for settlement of recalled securities should be 15:30 on Settlement Date**

- **Practically:** The settlement of stock loan recall transactions should be completed in time to allow the incoming securities to be reused within the same settlement day.

**Recommendation 10: DvP Cutoff - All SSSs should align to a 16:00 DvP cutoff at the earliest (for EUR and other EEA currencies)**

**Recommendation 11: FoP Cutoff - All SSSs should align to a 18:00 FoP cutoff**

- **Practically:** Changes to the EOD cutoffs are deemed to require substantial additional analysis, which may not be possible before October 2027. They are not to be taken as a precondition for implementation by October 2027. Additional analysis for a future possible extension of DVP cutoff to **17:00** is in progress, to assess feasibility for all market actors, also considering different cutoffs for EUR and DKK and other EU currencies.
- Some non-T2S CSDs may not be able to close settlement at the same cut-offs as noted in these two Recommendations, due to local market arrangements, e.g. central bank opening hours.

**Figure 2: Current estimated timings for CCP EoD report and settlement instructions for T+1**

CCP	Netting reports to Clearing Members		Settlement instructions sent to CSDs	
	Currently	Under T+1 (current estimate, potentially subject to adjustment)	Currently	Under T+1 (current estimate, potentially subject to adjustment)
<b>ATHEX Clear</b> (Equity and Fixed Income)	17:45 on T	TBC	By 16:00 on CET	TBC
<b>BME Clearing</b> (Equity, Repo)	19:30 on T+1 (equity)	TBC	19:00 - 19:30 on T+1 (equity)	TBC
	ISD-1 (Repos) Same day repos are sent to settle in real time	TBC	ISD-1 (Repos) Same day repos are sent to settle in real time	TBC
<b>CBOE Clear Europe</b> (Equity)	20:30 on T	TBC	20:00 on T	TBC
<b>CCP Austria</b> (Equity, Fixed Income and Structured Products)	shortly after 18:00 on T	TBC	17:00 on T+1	TBC
<b>Eurex Clearing</b> (Equity, Fixed Income and Repo)	~23:25 on T (for cash markets)	~22:30 - ~22:45 on T (for cash markets)	By ~23:10 on T (for cash market)	between 22:20 - 22:30 on T (for cash market)
	n/a	n/a	By ~18:15 on T (for Repo)	By ~18:15 on T (for Repo)
<b>Euronext Clearing</b> (Equity, Fixed Income and Repo)	21:00 CET (equity)	TBC	21:40 (equity)	TBC
	ISD -1 at 19:30 (fixed income & repo markets)		ISD -1 at 19:30 (fixed income & repo markets)	
<b>KDPW CCP</b> (Equity and Fixed Income)	19:30 on T	19:30 on T	19:30 on T	TBC
<b>KELER CCP</b> (Equity and Fixed Income)	By 18:45 on T	TBC	18:00 on T	TBC
<b>LCH Ltd</b> (Equity and Fixed Income)	Between 20:00 - 21:00 on T	TBC	20:00 on T	TBC
<b>LCH SA</b> (Fixed income and Repo)	19:30 on ISD -1	TBC	19:15 on ISD -1	TBC
<b>SIX x-clear</b> (Equity and Fixed income)	20:30 on T	TBC	20:30 on T (Equity and Fixed income)	TBC
<b>SKDD CCP</b> (Equity, Bonds, Treasury bills and ETFs)	16:45 on T+0 (available as the Obligation report through members' application)	16:45 on T+0 (available as the Obligation report through members' application)	07:30 T+1 (since 15.1.2024*)	TBD but the goal is 17:00 T+0

These timings may be subject to change as work progresses. Source: EACH

## 3. Affected Business Tasks

### 3.1. Trading

#### **Trading Phase**

Regarding the trading phase recommendations: trading venues, and other FMIs are encouraged to consider how best to notify market participants and infrastructures when they expect to implement changes or if they do not intend to do so. With regards to timing of these notifications, please also be mindful that market participants will be reliant on updates for their planning. Early notification and transparency, where appropriate, is critical to efficient planning and transition – at least in advance of October 2027. Trading venues and other FMIs should engage with their trade associations and reach out to the relevant EU T+1 working group, should they have any concerns they wish to raise, regarding the below manual guidance and T+1 transition plans. Below are examples regarding expectations of what trading venues are expected to implement to facilitate the EU's move to T+1.

#### **TR01 – End-of-Day Signal from Trading Venues to CCPs**

**Signal coordination.** Based on the different trading cut-off times, trading venues must send a definitive “end-of-day” signal to CCPs. This signal is initiated right after trading in a market closes for the day and serves as the definitive trigger for the CCP to begin its own end-of-day processes:

- Transaction netting
- Generation of settlement instructions
- Delivery of netting reports to clearing members
- Reconciliation processes

The “signal” is an automated technical message sent from a trading system to the connected CCPs. In theory, this is already an automated and well-established process with each trading venue, which will need to ensure its timing remains optimal under the compressed settlement cycle.

#### **TR02 – Trading Venue Rulebook Updates**

**Rulebook Audit.** Ensure all changes are consistent with MiFID II/MiFIR and CSDR frameworks. Review and revise clauses related to:

- Ex-date handling
- Cancellation windows
- Trade reporting deadlines

Once changes are adopted, publish a summary of the rulebook changes and rationale to market participants.

### **Rulebook general T+1 update:**

Trading venues are encouraged to review the scoping recommendations in the EU T+1 [High Level Roadmap](#), pages 8&9, and update their rulebook to ensure securities noted in the table on page 9 transition to T+1 default settlement cycle. *Note, securities as derivatives require a further discussion and are subject to ongoing work by the Scoping workstream with the support of ISDA & FIA.* The scoping recommendations have clearly described scenarios where a transition to T+1 should be facilitated by updates to trading venue rulebooks. Trading venues are expected to review these recommendations and consider which products and scenarios are applicable to them, in order to make targeted amendments to facilitate T+1 transition in the EU. Example of rulebook changes noted below:

- Current text: “Trades executed on T shall settle on T+2 unless otherwise agreed.”
- Proposed Revision: “Trades executed on T shall settle on T+1 by default. Exceptions to this rule must be explicitly agreed and documented prior to execution.”

### **Ex-date Revision:**

- Current practice: Under T+2, the ex-date precedes the record date by one business day.
- Required change: Under T+1, the ex-date and record date must fall on the same calendar day. This ensures that trades executed on T settle on T+1 and are reflected in the shareholder register by the record date.

## **3.2. Matching and Confirmation**

### **3. 2.1. Key implementation factors**

Currently, the pass-on of a client’s **standing settlement instructions (SSI’s)** can be sub-standard due to manual processing and different data standards. SSI inefficiency is widely recognized as one of the major pain points in the context of settlement matching / settlement efficiency with calls to address and standardize processes across the industry being referenced in previous and current industry efforts to improve the operation and integration of post trade in the EU.

Detailed market practice and well-documented technical requirements / changes promoting standardization across these three crucial pre-settlement areas will support the market’s transition to T+1, promote efficiency and timely settlement. Specifically, the Industry Committee in its final report “High-level Roadmap to T+1 Securities Settlement in the EU”, has highlighted the wish of developing market practices in relation to:

- Trade-level Matching (MC-01)
- Client Static Data (MC-04)

To achieve the outcome, this Handbook outlines market practices across several core themes of which the following 2 have been published (while Allocation and Confirmation market practice is ongoing):

- i. SSI Exchange and Storage
- ii. Trade Matching (pre-CSD)

### 3.2.2. Objectives and expected deliverables

**Practically:** The Handbook recommends the following objectives for market participants:

1. SSI Exchange and Storage
  - That SSIs are populated and exchanged STP
  - That SSI efficiency is maximised through the development and adoption of more standardized processes for sharing and storing SSIs.
  - That SSI communication flows are fully STP
  - Messages for SSI exchange are available in ISO20022
2. Trade Matching (Pre-injection of settlement instruction into SSSs)
  - messaging formats for trade matching and related status updates are available in ISO20022

### 3.2.3. Specific Considerations and Examples

#### *MC-03.*

The Securities Markets Practice Group (SMPG) supports creating a unified industry format for settlement instructions and focuses on clarifying the correct use of Place of Settlement (PSET) and Place of Safekeeping (SAFE), two fields that frequently cause operational challenges. The group reaffirms existing market practice, emphasizing that PSET must always reflect the BIC11 of the counterparty's CSD, and that SAFE should only be used when securities are held across multiple locations or are multi-deposited where the safekeeping location is unambiguous, fixed by market structure, or not relevant for the processing of the instruction, PSAF should not be populated. SMPG highlights the need to support diverse PSETs in cross-border and investor-CSD models, particularly within T2S, and outlines key differences between ISO 15022 and ISO 20022, noting that while ISO 20022 offers greater structure, the industry largely relies on ISO 15022. SMPG remains neutral on standard migration, instead promoting clarity and consistent application within current frameworks to support efficient settlement under T+1 timelines.

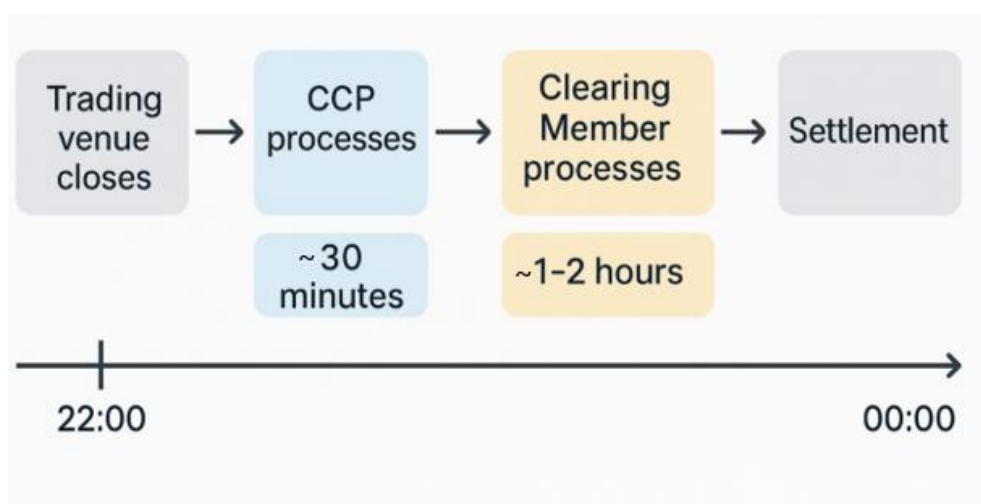
### 3.3. Clearing

#### 3.3.1. Rational

The upcoming implementation of T+1 settlement in the EU in October 2027 will significantly compress the post-trade window, shortening the time available for the clearing and settlement processes. To support this, the EU T+1 Clearing Technical Workstream (TW) recommended, in June's High-Level Roadmap, that the operational changes made by the clearing ecosystem should focus on the following outcomes. To recap:

- **For Central Counterparties (CCPs):** Providing gross trade information (wherever applicable), Netting Report, and Settlement Instructions (SIs) to their Clearing Members and Settlement Agents and CSDs (SIs only) as soon as possible following the close of their last cleared trading venue(s)/platform(s). For those using T2S, this ideally means having performed the above by approximately 22:30, giving the clearing participants enough time before the potential NTS batch time of 00:00 on T+1.
- **For Clearing Members (CMs), Settlement Agents (SAs) and Broker Dealers:** Compression of their processes of reconciliation, inventory management, record creation and sending/releasing of settlement instructions to be ready on time for their relevant Securities Settlement System start. As for CCPs, depending on which SSS is being used (T2S or non-T2S/local), you should aim to be ready for the start of settlement.

**Figure 3: Example illustration of clearing process under T+1**



#### 3.3.2. Helpful practices

For clearing participants, the following practices are important to ensure a smooth transition to T+1 settlement.

- For CCPs, identifying where and how you can compress your report and instruction development processes, to understand how soon following end of trading your reports and settlement instructions will be available for clearing participants. The elements to consider may vary depending on whether a CSD or Settlement Agent Power of Attorney (PoA) model is used.
- For CCPs, should trading activities being cleared extend beyond 22:00, Central Counterparties (CCPs) and their participants should establish clear protocols for how the clearing of such transactions will function.
- For CMs, SAs and Broker-Dealers, identifying how you can compress your processes as much as possible so they can be completed prior to the commencement of the settlement process in the respective Securities Settlement Systems / CSDs. This could involve:
  - Reconciling real-time execution reports with end-of-day gross execution reports on T.
  - Establish records for cleared transactions submitted to the CSD or capture CCP-cleared instructions from the Securities Settlement System / CSD (CSD PoA model)
  - Process cleared transactions submitted to the Settlement Agent by the CCP (SA PoA model)
  - Conducting inventory management activities on T+1.
  - Verifying that all trades are prepared for settlement prior to the commencement of the settlement process within their respective Securities Settlement Systems / CSDs.
- Continued conversation with your CCPs and/or Clearing participants to understand what specific operational timings and gating events enable the best chance of efficient T+1 settlement.

### 3.3.3. Specific considerations and examples

Securities Settlement Systems (SSSs) and Central Securities Depositories (CSDs) that implement a T+1 settlement cycle without incorporating a night-time settlement component are to ensure that Central Counterparties (CCPs), Clearing Members, and Settlement Agents are adequately supported in performing their respective processes. This is critical for maintaining or enhancing the overall efficiency of the settlement of cleared transactions.

## 3.4. Settlement

### 3.4.1. Rational

The transition of the European securities market to a T+1 settlement cycle requires comprehensive technical, infrastructural and behavioural changes across the post-trade ecosystem. With settlement being the ‘outcome’ of numerous upstream and periphery processes, the dependencies, implications and impact to securities settlement is pronounced. This is in addition to the wider ‘settlement specific’ adaptations required to enable a seamless process in the time-constrained operating environment.

The Settlements section of the High-Level Roadmap includes 26 recommendations with the primary objective to maintain high levels of settlement efficiency while ensuring the efficient use of liquidity and inventory. This requires an efficient operational environment with a high degree of automation and STP. In this Handbook we elaborate on the features required for a successful implementation across three interconnected themes alongside the specific changes for Trading Parties, CCPs, Settlement Intermediaries, (I)CSDs, and National Central Banks (NCBs):

1. **Instruction Management (ST-01):** Focuses on requiring real-time processing and standardization of settlement instructions to enable matching and exception resolution before the start of the settlement cycle.
2. **Securities Settlement System (SSS) Timings (ST-02):** Addresses the need for earlier SSS opening and harmonized DvP / FoP cutoff times across European currencies to maximize settlement time.
3. **Tools and Functionalities (ST-03):** Mandates the provision and usage of core risk-mitigating functionalities such as Partial Settlement, Hold & Release, and auto-collateralisation facilities by FMI and intermediaries to optimize liquidity and inventory usage.

Historically observed delays such as late trade booking, missing or poor-quality static data, and late allocation / confirmation processing significantly increase the risk of settlement failure. Therefore, the core principle guiding all recommendations is the requirement for earlier action, greater automation, and improved harmonization. Settlement instructions must be matched ideally prior to the start of the settlement process, facilitating the completion of related activities such as inventory management and funding so that the instruction can settle at the earliest opportunity when the Securities Settlement System (SSS) opens.

Adherence to the timelines and adoption of the functionalities detailed within this handbook is paramount for all market participants to mitigate operational risk, reduce the likelihood of settlement failures, and support the broader integrity of the European capital markets in a T+1 setting.

### 3.4.2. Model: Current vs future

The shift to T+1 necessitates a fundamental change in market behaviour, transforming a process that currently, thanks to less time pressure, can tolerate later instruction and matching (for example on T+1) into one that demands timely injection, proactivity, accuracy and automation from all post-trade actors in the chain. The comparison below highlights the key differences between the current operational model and the target state required for the October 2027 implementation.

#### 1. Instruction processing and timeliness

The core objective is to move instruction and matching activity to TD to allow for timely exception management.

Feature	Current	T+1
<b>Instruction Execution</b>	<p>Processing may not always be fully STP. Manual processing, while sometimes feasible in isolation and / or for low volume, adds latency and operational risk both of which could impact the counterparty or client, settlement intermediaries and wider settlement chain.</p> <p>The speed of transmission also varies; settlement instructions might be held and only released in a single batch at the end of the day meaning that instructions might not reach the SSS in business hours on TD.</p>	<p>All post-trade actors are encouraged to make technical changes to support automated / STP instruction processing in a machine readable format, eliminating fax and other non-standard processes. <b>Settlement instructions should be processed in real-time</b> after trade-booking / allocation / confirmation so that they can reach the SSS as soon as practicable for settlement matching.</p>
<b>Matching &amp; Exceptions</b>	<p>Discrepancies may not be identified and resolved until late on ISD-1, Intended Settlement Date (ISD) or later, resulting in inefficient use of inventory and funding and settlement fails</p>	<p>With the benefit of real-time processing based on STP, <b>settlement instructions should reach the SSSs moments after (timely) booking</b> where mismatches and broader exceptions can be identified swiftly enabling instructing parties to resolve exceptions as early as possible, ideally before the start of the settlement process.</p>

<p><b>Resource / Inventory Management</b></p>	<p>Custodians / Settlement Agents (Settlement Intermediaries) have to monitor their clients' securities or cash positions and may delay submitting instructions to the (I)CSD until securities or cash are in place. This is particularly relevant in omnibus account structures.</p> <p>The use of instructing 'on-hold' is underused in some markets and results in instructions not being visible for matching (whilst on-hold) in the SSS. Note that not all CSDs are required to support 'Hold &amp; Release' today due to a derogation in CSDR Level 2.</p> <p>From a trading party perspective (and other participants of a (I)CSD), inventory management processes whereby depot realignments take place to have the securities available for settlement is not always performed ahead of ISD but rather as a 'fails management' process.</p>	<p>Where resources are not yet in place, <b>Settlement Intermediaries should use the 'Hold' functionality</b> to transmit settlement instructions so that they reach the SSS and enable early (I)CSD level settlement matching and exception identification by the trading parties.</p> <p>Failure to do this means that any settlement matching exceptions are still undetected and could result in fails and generate cash penalties.</p> <p><b>Trading Parties must fund their cash accounts ready for the start of settlement noting each CSDs (and any intermediaries) deadlines.</b> It should be recognised that Cash Management / Treasury processes may need to be adapted so that non-same-day currencies are funded timely.</p> <p><b>Trading parties and settlement intermediaries should also ensure securities are in the correct account ready for settlement.</b> It may therefore be necessary for trading parties and settlement intermediaries to accelerate their inventory management processes to take place on TD or at the latest start of business on ISD.</p>
---	---	---

## 2. Securities Settlement System (SSS) timings

Settlement timings need to strike a balance between providing global market participants sufficient time after trading to be able to cascade their instructions through to the SSS yet starting the settlement process early enough to maximize the settlement window and optimize settlement efficiency.

Feature	Current	T+1
<b>Instruction Submission</b>	<p>The time of market participants to release instructions can vary. Some participants instruct real-time while others may instruct in batches intra-day or, less efficiently, end of day. This means instructions are not available for settlement matching at the SSS until T+1 or even later.</p> <p>Settlement Intermediaries may delay instruction until the client's funding or inventory is confirmed, in the absence of a 'Hold' functionality at SSS or Settlement Intermediary level.</p>	<p><b>Instructions should be submitted to the SSS no later than 23:59 on TD.</b></p> <p>Following the steps above in Table 1 should mean that instructions should be available for matching and ideally matched at the SSS before the start of the settlement cycle.</p> <p>The deadline of 23.59 on TD has been agreed to maximize settlement efficiency and reduce the number of exceptions management and processing on ISD.</p>
<b>SSS Opening<sup>2</sup></b>	<p>Opening times can vary across the SSS of the (I)CSDs and T2S.</p> <p>Whilst many operate a Night-time Settlement (NTS) process, several CSDs do not start settlement until the - morning of ISD which reduces the processing window.</p> <p>T2S commences its first NTS batch at 20.00 CET on ISD-1 which means settlement instructions per the current process will need to have reached T2S by 20.00 to make the first NTS batch as an example.</p>	<p><b>All SSS should start settlement by 00:00 on ISD.<sup>3</sup></b></p> <p>SSS who do not commence settlement by 00.00 CET on ISD today are encouraged to review their current arrangements with the support of other national stakeholders to meet this recommendation.</p>
<b>DvP and FoP Closing</b>	<p>SSS cut-off times for standard DvP and FoP settlement lack</p>	<p><b>Establish a harmonized DvP settlement close at 16:00</b> for settlement in EUR across all relevant (I)CSDs and align non-EUR</p>

<sup>2</sup> Note: ICSDs are expected to continue to start settlement ahead of 00:00 to facilitate APAC investors.

<sup>3</sup> Some non-T2S CSDs may not be able to start settlement as early as 00:00 today due to local market arrangements, e.g. central bank opening hours. The IC recommends that these timings be reconsidered per recommendation 'ST-02.1 of the High-level Roadmap.

	<p>harmonization across the EEA markets.</p> <p>Some non-EUR markets currently have cutoffs earlier than the 16:00 CET DvP close.</p>	<p>European currencies to the same 16.00 DvP settlement cut-off to achieve greater standardization and harmonization in the region.</p> <p><b>Establish a FoP cutoff of 18:00 across all SSS<sup>4</sup></b></p>
--	---	--

### 3. Core tools and functionality support

The use of risk-mitigating and settlement efficiency-enhancing tools must be standardized and universally available for widespread use.

Feature	Current	T+1
<p><b>Partial Settlement</b></p>	<p>Both the offering and use of partial settlement, most notably the use of auto-partial, is piecemeal across European markets.</p> <p>The functionality may be unavailable at the (I)CSD or Settlement Intermediary level or Trading Parties might simply elect not to use it.</p> <p>Note that the requirement under CSDR Art. 10 for CSD provision of a Partial Settlement mechanism is subject to derogation under Art. 12.</p>	<p><b>Partial settlement functionality must be provided by all (I)CSDs and supported by all Settlement Intermediaries without exception.</b> This is supported by ESMA's Final Report on Amendments to the RTS on Settlement Discipline of 13.10.2025 which proposes to remove the existing CSDR derogation and to mandate that all CSDs enable auto-partial settlement.</p> <p>Similarly, trading parties and other participants of a (I)CSD or clients of Settlement Intermediaries should make use of the functionality.</p> <p><b>A <u>market practice</u> has been developed mandating the use of partial settlement as a default, except for specific and well-documented use cases.</b></p>

<sup>4</sup> ICSDs are expected to keep their FOP cut-off after 18:00 to facilitate global investors settlement

<p><b>Hold &amp; Release (Partial Release)</b></p>	<p>Not all (I)CSDs support and offer hold &amp; release today. Similarly, not all Settlement Intermediaries make use of the functionality where it is offered by the (I)CSDs.</p> <p>Note that the requirement under CSDR Art. 8 for CSD provision of a Hold &amp; Release mechanism is subject to a derogation under Art. 12.</p>	<p><b>Hold &amp; Release / Partial Release (in the context of omnibus accounts) must be provided and offered by all (I)CSDs and Settlement Intermediaries without exception</b></p> <p>This is supported by ESMA's Final Report on Amendments to the RTS on Settlement Discipline of 13.10.2025, which proposes to remove the existing CSDR derogation and to mandate that all CSDs provide a Hold &amp; Release mechanism.</p> <p>Similarly, trading parties and other participants of a (I)CSD or clients of Settlement Intermediaries should make use of the functionality</p>
<p><b>POA Functionality</b></p>	<p>Not all (I)CSDs offer the CCPs Power of Attorney (PoA) for the creation of settlement instructions in the SSS.</p> <p>Similarly, where the CCP uses a Settlement Agent, PoA may not be offered.</p>	<p><b>PoA functionality</b>, including instruction of 'already matched' where applicable, <b>must be provided by all (I)CSDs and Settlement Agents</b> without exception. This harmonizes benefits and allows CCPs to maintain time-sensitive and efficient processes within the compressed T+1 timeframe.</p>
<p><b>Allegements</b></p>	<p>Not all (I)CSDs support settlement allegation reporting i.e. where a CSD participant receives notification of an instruction 'alleged' to their account for which they have not entered a corresponding instruction.</p> <p>Similarly, not all Settlement Intermediaries support allegation reporting.</p>	<p><b>Allegation identification and reporting</b> must be supported by all (I)CSDs and Settlement Intermediaries without any exception to aid prompt resolution of matching exceptions.</p> <p>It is therefore recommended that (I)CSDs and Settlement Intermediaries report all allegements to their respective clients to enable resolution e.g. booking a missed trade or amending the counterparty or economics to match.</p>

	<p>The lack of such a reporting service being provided or used may cause delays in resolution of settlement exceptions, matching and settlement.</p>	
--	--	--

### 3.4.3. Key implementation factors

Successful settlement in a T+1 settlement cycle depends on mandatory operational changes and high adoption rates of tools and functionalities by all market participants. These factors are grouped below by the primary change driver.

#### 1. Real-Time instruction and matching (ST-01)

The most significant factor is the acceleration of the instruction and matching timeline to take place on TD.

- **Real-time processing:** Trading parties must process settlement instructions in real-time after allocation / confirmation / trade booking to ensure timely cascading of instructions through the custody chain to the SSS / (I)CSDs
- **Instruction deadline:** All market participants must ensure instructions are submitted to reach the SSS no later than 23:59 on Trade Date. However, depending on the operational timetable of the settlement system (e.g. T2S) settlement instructions can still be input for processing in additional settlement windows offered by the SSS (e.g. T2S second night-time batch or daylight RTGS).
- **Automation / STP:** All post-trade actors should strive to support automated / STP instruction processing, eliminating non-standard methods like fax to remove unnecessary latency and operational risk, which could impact settlement efficiency to the wider settlement chain.
- **Settlement instruction standardization:** As mentioned in the [SMPG RECOMMENDATIONS ON PSET AND PSAF UNDER T+1 SETTLEMENT](#), market participants should adopt this agreed- 'gold standard' in their settlement instructions. This is crucial for promoting STP and interoperability.
- **Use of 'Hold':** Settlement Intermediaries should use the 'Hold' functionality to enable early (I)CSD level matching and exception identification even when cash/stock is not yet in place. This supports timely matching while safeguarding client assets.

- **Transaction identification:** As outlined in the task force document [Transaction type Identifiers in Settlement Instructions](#), market participants should ensure complete and consistent use of the existing “transaction type” field (ISO 20022/15022) to correctly distinguish transaction types (e.g., SFTs : SECL-REPO....vs. TRAD).

## 2. Settlement system efficiency (ST-02)

Securities Settlement System (SSS) timings must be harmonized and advanced to maximize the settlement window.

- **SSS Opening:** Securities settlement systems must open for settlement at the latest by 00:00 on Settlement Day (SD) to maximize post trade / pre-settlement processing to ensure as many matched instructions reach the SSS ready for settlement. Nonetheless, depending on the settlement platform’s operating schedule (e.g., T2S), it remains possible to submit settlement instructions for processing in additional cycles offered by the SSS, such as a second night batch or a daylight RTGS window.
- **Harmonized cutoffs:** A harmonized close of the DvP settlement window at 16:00 is required for standard settlement in EUR, with non-EUR European currencies aligning to this same cutoff. The FoP cutoff should be 18:00.<sup>5</sup>

## 3. Mandatory tools and functionalities (ST-03)

The provision and use of critical settlement tools must become universal and mandatory.

- **Universal Partial Settlement:** All (I)CSDs and Settlement Intermediaries must support and provide Partial Settlement functionality, and all Trading Parties and other participants / clients of the (I)CSDs and Intermediaries should use it. The development of a [market practice](#) that proposes a common market practice to make partial settlement the default across European markets in support of the transition to T+1 and recommends a more frequent usage of partial release.
- **Universal Hold & Release:** All (I)CSDs must provide, and all Settlement Intermediaries / CCPs must support, the Hold & Release functionality without exception.
- **Allegation Support:** (I)CSDs and Settlement Intermediaries must support the identification and reporting of allegations to provide crucial information for investigating and resolving matching exceptions promptly.
- **POA Functionality:** All (I)CSDs and Settlement Agents must provide Power of Attorney (PoA) functionality, including instruction of ‘already matched’ where applicable, to maintain the efficiency of CCP and Clearing Member processes.

---

<sup>5</sup> ICSDs are expected to keep their existing operating timetable including a FOP cut-off after 18:00 to facilitate global investors settlement

#### 4. Liquidity and inventory optimisation

Effective resource management is crucial in a compressed cycle.

- **Forecasting tools:** Trading parties and Settlement intermediaries should use automated tools to forecast funding and position needs (including borrowing and realignments), preferably on an intraday basis.
- **Auto-facilities:** (I)CSDs and intermediaries are encouraged to offer auto-borrowing and auto-collateralisation facilities. Market participants should sign up as borrowers and, where possible, as lenders.
- **Netting:** Trading Parties are strongly encouraged to cooperate to maximize both bilateral and multilateral netting, standardizing and automating the process as much as possible.
- **Non-EU Currency Timeliness:** Trades in non-EU currencies (e.g., APAC, Middle East, ZAR) must be booked promptly after execution to enhance the ability to meet funding deadlines.

#### 3.4.4. Timeline and Milestones

The transition to T+1 settlement is a phased process with key intermediate milestones required ahead of the final October 2027 implementation date. Adherence to this timeline is essential for all market participants, (I)CSDs, and Settlement Intermediaries.

##### 1. By the end of 2026: Data transparency and process alignment

By the end of 2026, market participants must align core data and processing for optimal readiness:

- **PSAF Place of Safekeeping Reporting:** Custodians must include PSAF / SAFE information in their 'Statement of Holding' reporting to clients e.g. MT535 in ISO15022.
- **Transaction Type Identifier use:** Trading parties and Settlement Intermediaries must ensure complete and consistent use of the existing "transaction type" field in settlement instructions. This is for regulatory reasons (CSDR) and also to support (I)CSD SFT optimization processes such as prioritization rules, netting logic, and collateral allocation mechanisms—as detailed in the EU-T1 SFT Settlement Optimisation TF Report. Incomplete or inconsistent transaction type usage directly reduces the ability of CSDs and ICSDs to optimize SFT settlement, increases operational risk, and can negatively impact settlement efficiency under T+1 timelines.
- **Timely booking of trades in non-EU Currencies: Trading Parties** must ensure trades in currencies such as APAC, Middle East and ZAR currencies are booked promptly after execution.

## 2. October 2027: Final implementation

All required system changes, mandates, and operational processes must be fully implemented by this date, coinciding with the T+1 transition:

Implementation Requirement	Responsible Parties	Recommendation
<b>Instruction Management</b>	Trading parties, Settlement Intermediaries	<ul style="list-style-type: none"> <li>- Good quality and correctly formatted messages based on international agreed standards such as SMPG</li> <li>- Real-time processing</li> <li>- Automated / STP processing</li> <li>- Use of dynamic forecasting tools to ensure cash / position adequacy</li> </ul>
<b>SSS Timings</b>	(I)CSDs, NCBs	<ul style="list-style-type: none"> <li>- SSS opening by 00:00 SD</li> <li>- DvP 16:00 / FoP 18:00 cutoff</li> <li>- Alignment of non-EUR currencies to 16:00</li> </ul>
<b>Mandatory Functionality</b>	(I)CSDs, Intermediaries, CCPs	<ul style="list-style-type: none"> <li>- Provision / support of Partial Settlement</li> <li>- Hold &amp; Release support and offering</li> <li>- Reporting of allegements</li> <li>- POA functionality</li> </ul>
<b>Liquidity &amp; Netting</b>	Various	<ul style="list-style-type: none"> <li>- Inclusion of partial settlement window in T2S NTS</li> <li>- Auto-borrowing facilities</li> <li>- Maximising bilateral / multilateral netting</li> <li>- Auto-collateralisation facilities</li> </ul>

### 3.4.5. Objectives and expected deliverables

The successful implementation of the Settlement Phase recommendations should protect, or even improve, settlement efficiency in addition to greater standardisation of settlement processing in the EEA markets.

#### 1. Enhanced settlement efficiency and timeliness

**Objective:** To achieve the highest possible rate of settlement efficiency by accelerating instruction and matching activities to take place on trade date.

Expected Deliverable	Measurement	Recommendation Alignment
<b>Pre-Settlement Matching</b>	Instructions should be matched at the (I)CSD level before the start of the settlement, including the use of ‘matching on hold’	<b>ST-01.1</b> Real-time processing) <b>ST-03.5</b> (Hold & Release)
<b>Maximized Settlement Window</b>	Securities settlement systems open by 00:00 on Settlement Date	<b>ST-02.1</b> (SSS Opening)
<b>Maximised Partial Settlement</b>	To help increase settlement efficiency, partial settlement is to occur earlier in the day by introducing a partial settlement window in the first cycle of the T2S NTS (C1SX).	<b>ST-03.4</b>
<b>Prompt Exception Resolution</b>	Settlement matching exceptions and issues should be identified and resolved prior to the SSS’ start of settlement i.e. by 00.00 CET on ISD. Whilst it is still possible to resolve exceptions on ISD, it is a reduced window for resolution / correction (which will be an issue for trading parties operating outside of CET),	<b>ST-03.8a/b</b> (Allegation Reporting) <b>ST-01.1</b> (Real-time processing)

#### 2. Standardisation

**Objective:** To minimize latency and operational risk by mandating automation, standardizing data formats, and harmonizing cutoffs across Europe.

<b>Expected Deliverable</b>	<b>Measurement</b>	<b>Recommendation Alignment</b>
<b>Full Automation Adoption</b>	Automated / STP instruction processing supported by all post-trade actors	<b>ST-01.2</b>
<b>Harmonised Cutoffs</b>	Establishment of a harmonized DvP cutoff of 16:00 for standard settlement in EUR and alignment of non-EUR European currencies to 16.00 also	<b>ST-02.2</b> <b>ST-02.3</b>
<b>Standard Instruction Format</b>	Wide adoption of the <a href="#">SMPG RECOMMENDATIONS ON PSET AND PSAF UNDER T+1 SETTLEMENT</a> ,	<b>ST-01.3</b>
<b>Accuracy (and regulatory compliance)</b>	Correct use of the transaction type identifier in settlement instructions, ensuring compliance with CSDR regulatory technical standards	<b>ST-01.6</b>

### 3. Liquidity and inventory optimisation

**Objective:** To promote efficient use and management of cash balances and securities inventory within the time-constrained T+1 environment.

<b>Expected Deliverable</b>	<b>Measurement</b>	<b><u>Recommendation Alignment</u></b>
<b>Enhanced Inventory Management</b>	Partial settlement and Hold & Release functionality provided by all (I)CSDs, supported by all intermediaries and used by all market participants	<b>ST-03.1</b> <b>ST-03.2</b> <b>ST-03.5</b> <b>ST-03.6</b>
<b>Enhanced Inventory Management</b>	Use of dynamic cash and stock forecasting tools by trading parties and settlement intermediaries	<b>ST-01.5</b>
<b>Enhanced Intraday Liquidity</b>	Availability and use of Auto-borrowing facilities and Auto-collateralisation	<b>ST-03.12</b> <b>ST-03.14</b>

	facilities to support intraday liquidity provision	
<b>Settlement Optimization</b>	Maximized bilateral and multilateral netting (pair-offs) to reduce settlement cost, risk, and pressure on infrastructure	<b>ST-03.13</b>

### 3.4.6. Specific Considerations and Examples

#### 1. Sector-specific implementation summary

Market Participant	Key Action / Consideration	Rationale
<b>Trading Parties</b>	<ul style="list-style-type: none"> <li>- Instruct settlements continuously throughout the trading day by 23.59 on TD</li> <li>- Process instructions in real-time after allocation / confirmation / trade booking</li> <li>- Use dynamic cash and stock forecasting tools to identify funding and depot realignment needs</li> <li>- Make full use of settlement optimization tools such as partial settlement</li> <li>- Use the correct <a href="#">Transaction type Identifiers in Settlement Instructions</a> ‘</li> </ul>	<ul style="list-style-type: none"> <li>- Ensures timely matching to achieve Settlement Finality 2 (SF2)</li> <li>- Facilitates intra-day exception management on TD</li> <li>- Reduces settlement risk and the cost of overdraft / credit lines</li> <li>- Ensures resources are in place for settlement</li> </ul>
<b>CCPs</b>	<ul style="list-style-type: none"> <li>- Support and utilize POA functionality</li> </ul>	<ul style="list-style-type: none"> <li>- Allows Clearing Members and Settlement Agents time to reconcile netting reports and allocate resources</li> <li>- Utilising POA maintains the efficiency of CCP and CM processes</li> </ul>
<b>Securities Lending / Financing Participants</b>	<ul style="list-style-type: none"> <li>- Send settlement instructions to Settlement Agents / (I)CSD without delay</li> <li>- Make use of settlement optimization tools where relevant</li> <li>- Use correct transaction type</li> <li>- Ensure securities in the correct depot</li> </ul>	<ul style="list-style-type: none"> <li>- Enables matching at the (I)CSD ahead of instruction close / settlement cutoff, particularly as SFTs may not follow the T+1 convention</li> <li>- Ensures securities are in place for settlement</li> <li>- Ensures instructions are eligible for SFT optimization</li> </ul>

<b>(I)CSDs</b>	<ul style="list-style-type: none"> <li>- Must provide and support real-time instruction processing, partial settlement, hold &amp; release, and POA functionality without exception</li> <li>- Should start settlement by 00.00 on ISD.</li> </ul>	<ul style="list-style-type: none"> <li>- Failure to offer these tools results in lower settlement efficiency and the use of inefficient manual workarounds</li> <li>- Failure to commence settlement by 00.00 could impact settlement efficiency</li> </ul>
<b>Custodians / Settlement Agents</b>	<ul style="list-style-type: none"> <li>- Should use the 'Hold' functionality when resources (Cash / Stock) are not yet in place</li> <li>- Must include PSAF information in Statement of Holding reporting to clients</li> <li>- Must support all tools &amp; functionalities e.g. partial settlement</li> </ul>	<ul style="list-style-type: none"> <li>- Prevents delaying instruction until resources are present, which otherwise denies clients the ability to match promptly</li> <li>- Limits PSET issues and avoids the need to amend instructions, reducing latency</li> <li>- Optimizes liquidity and settlement efficiency</li> </ul>

## 2. Functional examples and best practice

### i. Hold & Release Functionality (ST-03.5/03.6/03.7)

- **Best practice:** Wide adoption of 'Hold & Release' is recommended in all cases where a delay in instruction could otherwise lead to a delay in achieving matching and timely settlement. Held instructions should be released as soon as possible and in sufficient time to allow settlement.
- **Use cases:** Trading Parties and Settlement Intermediaries can use Hold & Release for business prioritization, CCP buy-in management, omnibus account management, and credit line / resource management.
- **Impact of non-use:** Custodians / Settlement Agents delaying instruction until resources are in place deny their clients the ability to match and resolve exceptions promptly, increasing the risk of settlement fails and late matching fail penalties.

### ii. Partial Settlement (ST-03.1/03.2/03.3)

- **Implementation impact:** If (I)CSDs and intermediaries fail to offer this functionality, it leads to lower settlement efficiency and the use of inefficient workarounds such as manual partials, which impacts cash penalty liabilities and results in bilateral claims.

- **Partial Settlement Taskforce:** The Taskforce assessed factors that hinder wide adoption, such as reducing cost disincentives and aligning with minimum trading size.
- **Potential exemptions:** The [market practice](#) assessed underlying business flows and document possible exceptions. Examples warranting careful exploration include Portfolio Transfers and Securities Lending due to contractual documentation.

### 3. Transaction Type Identifier (ST-01.6)

- **Core Issue:** While mandatory under CSDR, the use of the Securities Transaction Type field (ISO 20022/15022) is not consistently followed, making it impossible to distinguish between cash transactions and SFTs at the settlement level. Using the incorrect transaction type identifier for the underlying trade / settlement instruction impacts CSDR CSD Fail Reporting and in the coming application of cash penalty exemptions.
- **Benefits:** Consistent use ensures market participants comply with CSDR technical standards and significantly improves operational efficiency, for example, by facilitating the automation of the manufactured payments process.

## 3.5. Asset Management

### 3.5.1 Context

The transition to a T+1 settlement cycle marks a significant shift for asset management firms, impacting operational workflows, technology platforms, and risk management practices. The accelerated settlement timeline demands greater efficiency, tighter coordination with all relevant market actors (e.g. sell-side, fund custodians, transfer agents, fund distributors), and increased automation throughout the investment lifecycle. Asset managers are encouraged to adapt their processes along the value chain to meet shorter deadlines, which requires streamlined communication and robust operational resilience.

Flexibility in fund settlement cycles remains important for investment managers to maintain operational stability and support international distribution models for EU-domiciled funds (UCITS & AIFs). However, diverging settlement cycles between assets (securities) and liabilities (fund units) create challenges for liquidity management, fund performance, and regulatory compliance, highlighting the importance of carefully matching fund units and security settlement timelines.

### 3.5.2 Model: Current vs future

Currently, the T+2 model gives market participants an extra day to confirm trades & allocate security transactions as well as to resolve exceptions. Shifting to T+1 compresses these processes, requiring real-time trade confirmation and allocation, supported by robust

straight-through processing (STP) and integrated data management solutions. This demands more streamlined communication with brokers, and counterparties and custodians.

Currently, settlements for fund subscriptions and redemptions can generally be T+2, T+3, or T+4, resulting in potential mismatches between cash inflows/outflows and security settlements. The 'To Be' model recommends reducing the fund unit's settlement cycle where feasible, ideally to T+2 or T+1, to minimise complexity and liquidity management costs. This will require extensive co-ordination with transfer agents, fund distribution platforms and custodians. However, longer settlement periods may still be appropriate for certain distribution channels or for operational considerations.

Many ETFs have already moved to T+1 for primary market transactions, i.e. where they track benchmarks containing mostly US securities. The 'To Be' model recommends that ETFs continue to align primary market settlement (subscriptions/redemptions) with the settlement of the underlying securities. This will result in T+1 primary market transactions as standard for those ETFs tracking benchmarks containing European securities.

### 3.5.3 Key implementation factors

General considerations:

- Ahead of the transition to T+1, investment managers should conduct a thorough analysis of where they currently would struggle to meet operational deadlines to settle securities on T+1 basis and where data exchanged with counterparties contains frequent errors. This assessment should be used to identify root causes and highlight areas where targeted improvements are needed. Strengthening these weak points will help increase overall data accuracy and improve firms' readiness.
- Firms may need to adjust for instance, operational hours or staffing, to accommodate compressed timelines and cut-offs on T. Proactive engagement with all relevant market actors and adoption of industry best practices is vital for a successful transition.
- Mismatches between fund and security settlements may require strategies such as extended settlement (OTC), overdrafts, cash sweeps, derivatives, or cash buffers or a reduction in the SEPA –SDD, all of which have cost and performance implications. Synchronising fund and security settlement cycles can help mitigate liquidity mismatches and reduce the need for costly workarounds.
- Collaboration with service providers and counterparties is essential to ensure operational alignment and technology upgrades to meet shortened security settlement as well as fund units' settlement cycles.

Considerations to achieve T+1 security settlement:

- Reduce manual tasks in Trade Support and Middle Office processes and increase automation of trade matching, allocation, and confirmation processes. This will be critical to increase accuracy of trade booking, meet shortened deadlines and reduce operational risk.

- Ahead of the T+1 migration, extend the scope of fields reconciled with counterparties to minimize the risk of future failed trades. This enhanced reconciliation practice should then be maintained as part of the regular run process after the migration.
- Execute securities orders on a continuous basis rather than at market close only (where manageable in line with the investment strategy).
- All reference data necessary to settle a trade should be kept updated.
- Enhanced monitoring of settlement fails.
- Seamless connectivity between portfolio management systems, OMS, and custodians is required for timely settlements. Use of dynamic cash and stock forecasting tools is recommended.

Regulatory consideration:

- The UCITS Directive imposes limits on fund cash deposits and borrowing. Liquidity mismatches resulting from settlement misalignment could impact compliance. Regulatory clarification should be sought to treat cash breaches due to settlement misalignment as passive and non-reportable. Additional measures should not contradict existing forbearance granted by certain NCA(s).

### 3.5.4 Timeline and milestones

Asset managers should reassess and upgrade workflows, technology, and processes to support T+1 settlement by the target implementation date of October 2027. Key milestones include mapping current workflows, gap analysis, and implementing changes well before the go-live date. Regular testing, industry-wide coordination, and staff training are essential.

Where possible, fund settlement cycles should be reduced, where feasible, to T+2 or T+1 by October 2027. However, where operational constraints exist, longer settlement periods may be retained. Regulatory clarification on cash breaches should be finalised by end of 2026, and collaboration with service providers and distribution channels is critical to achieving these milestones.

### 3.5.5 Objectives and expected deliverables

The primary objective for asset managers in the transition to T+1 is to achieve compliance, maintain operational stability and compliance while optimizing liquidity management practises. Expected deliverables include:

- Implementation of robust STP and automation solutions to reduce manual intervention.
- Upgraded technology platforms and enhanced integration with custodians and other market actors.
- Revised internal procedures and operational workflows to support T+1 settlement.
- Clear communication and coordination with external stakeholders (e.g. clients, vendors, counterparties & custodians) regarding changes to settlement cycles, cutoffs & procedures, both for assets as well as fund units.

- Update of SLAs to reflect operational requirements including e.g. cut-off times, required formats and other processing modalities.
- Deliver comprehensive training and updated documentation to internal teams.
- Align legal fund document updates, pricing, NAV calculation, and reconciliation processes with the new settlement cycle.

## 3.5.6 Specific Considerations and Examples

### 3.5.6.1. Trade allocation and confirmation

To meet T+1 timelines, asset managers must expedite trade allocation and confirmation processes, potentially leveraging real-time affirmation platforms and pre-matching tools. Early engagement with brokers and custodians to synchronize workflows is recommended.

### 3.5.6.2. Exception management

Exception handling must be re-engineered to resolve issues within compressed timeframes. Implementing automated alerts and escalation protocols will help mitigate the risk of settlement failures.

### 3.5.6.3. Changing fund settlement cycle

Changing the fund settlement cycle requires a diligent review of distribution and accounting timelines and processes. Areas to be analysed:

- Subscription/redemption cut-off
- Pricing and valuation of assets
- NAV calculation and publication
- Reconciliation procedures
- Cash forecast
- Implication of operational changes on legal fund documents
- Investor information / transparency requirements via durable medium

## 3.6. FX

### 3.6.1. Overview of findings:

The Foreign Exchange (FX) markets were assessed, and four recommendations were included in the final report titled 'High-Level Roadmap to T+1 Securities Settlement in the EU':

#### **FX-01 – FX Lifecycle**

Market participants should consider in their planning how they will engage with custodian/third party providers to successfully execute foreign exchange (FX) transactions in time to ensure successful processing across the full FX lifecycle from trading to settlement. Key considerations include:

- liquidity patterns for Czech Koruna (CZK), Polish Zloty (PLN), Romanian Leu (RON) and Icelandic Krona (ISK);
- partial settlements of securities (and the potential increase in the frequency of this);
- impact on FX requirements of late trading in other asset classes; and
- the need or desire to allocate a securities trade as soon as possible.

**Priority – High, Who – FX Market Participants, When – As soon as practicable**

#### **FX-02 – Partial Settlement**

Market participants should consider and review with custodian/third party providers the potential increase in the partial settlements of securities and how this could impact decisions regarding how and when to fund FX requirements, keeping in mind the goal of reducing FX settlement risk.

**Priority – High, Who – FX Market Participants, When – As soon as practicable**

#### **FX-03 – Settlement Risk**

For any FX trades settling outside of PVP mechanisms, FX Market Participants will need to review their practices to reduce FX settlement risk in line with the FX Global Code.

**Priority – High, Who – FX Market Participants, When – Ongoing**

#### **FX-04 – PVP Mechanism**

Market participants will need to continue engagement with custodians and complete assessment of instruction methods (e.g., cutoff alignment after EU market closes, functions available to accommodate currency holidays, etc.). CLS is expected to continue assessment of any impact on settlement risk reduction via CLS from shortened security settlement cycles. FX transactions must be dealt, processed, and submitted to CLS no later than 00:00 on settlement day (SD) to ensure their inclusion in the CLS settlement cycle.

**Rationale** – To ensure that any PVP eligible FX transactions continue to settle via a PVP mechanism (e.g., CLS). FX transactions will need to be dealt, processed, and submitted to CLS no later than 00:00 on settlement day (SD) to ensure their inclusion in the CLS settlement cycle.

**Priority – High, Who – FX Market Participants, When – Ongoing**

In getting to these final recommendations the FX group<sup>6</sup> produced a detailed technical report with the goal:

‘To produce a document for wholesale FX (FX cash and derivatives, ranging from the provision of liquidity to post trade i.e. across the full lifecycle) which makes a series of recommendations to address, including:

- More detail/depth/technical analysis where required (e.g. to encourage more tangible and practicable recommendations).
- Consider areas of potential stress or uncertainty that the market can resolve.

Analysis and output are to consider previous FX analysis in the US and UK and any market experiences following go-live in the US and other jurisdictions (e.g. Canada, Mexico). The intention is to avoid any duplication and to promote harmonisation.’

To support the Industry Committee leadership in their global outreach in promoting awareness and therefore encouraging preparation for the 11 October 2027 transition date, the FX group also produced a targeted supplementary [paper](#) for market participants to use in their preparation.

### 3.6.2. Relevant documents produced:

The Global Foreign Exchange Committee (GFXC)<sup>7</sup> has recently published a [paper](#) examining FX market preparedness for the transition of UK and EU securities to T+1 settlement. The report closely aligns the recommendations developed under both the UK and EU FX workstreams and provides valuable global visibility into the industry’s efforts to support a more efficient settlement environment. As an internationally recognised body composed of central banks and private-sector participants, the GFXC aims to promote a robust, fair, liquid, and transparent FX market. Its analysis offers an authoritative external resource that reinforces the strategic direction and industry coordination underpinning the current settlement-related initiatives.

### 3.6.3. Conclusion:

It is expected that preparation to enable the successful migration to T1 in jurisdictions that have already gone live, such as the US, will enable many firms to successfully implement T1 in the EU.

For those firms who are yet to commence their own preparation, it is our hope that these supplementary findings provide guidance, considerations and value-add to aid the journey to implementation – and to achieve a successful outcome for all.

---

<sup>6</sup> Consisting of over 180 market participants from the buy side, sell side, custodians, intermediaries, trading venues, trade associations and professional service firms

<sup>7</sup> [www.globalfxc.org](http://www.globalfxc.org)

## 3.7. Corporate Events

### 3.7.1. Rational

This note identifies the necessary changes to achieve higher automation of corporate events processing, including risk reduction in view of T+1. The proposals in this note build on the earlier CEG analysis on the potential implications of T+1 on the processing of corporate events. The note assumes that previously identified issues concerning the processing of corporate events on multi-listed and multi-traded securities will be automatically resolved with the realignment of the EU and North American standard settlement cycles, together with the proposed move of the United Kingdom and Switzerland to a T+1 settlement cycle as of 11 October 2027.

### 3.7.2. Model: Current vs future

#### Key dates: distribution events

In the post-trade industry, the **Ex Date** (also known as the **Ex-Entitlement Date**) is a critical milestone in the lifecycle of securities, particularly for dividends and other corporate actions.

#### Definitions

- **Ex Date:**  
Date from which the Underlying Security is traded without the benefit / right attached to it.
  - If you purchase the security **on or after** the Ex Date, you **will not** receive the upcoming benefit.
  - Only shareholders who acquire the security **before** the Ex Date are eligible for the benefit.
  - The Ex Date is determined by the market's settlement cycle. For example, in a T+2 environment, buying shares one business day before the Ex Date ensures settlement on the Record Date, making the buyer eligible for the distribution. If the trade fails to settle, the buyer remains entitled to the proceeds.
- **Record Date:**  
. The date set by the Issuer on which the rights flowing from the securities, including the right to participate in a Corporate Event, shall be determined, based on the settled positions struck in the books of the Issuer (I)CSD or other first intermediary by book-entry at the close of its business and/or register.
- **Payment Date:**  
Date on which the Payment is due.

## Industry standards and settlement cycles

- According to the **Corporate Event Joint Working Group European standards**:
  - Entitlements are based on **actual settled positions** in the Issuer (I)CSD's books at the close of the business on the Record Date.
  - Intermediaries may calculate entitlements on a **contractual settlement basis** as of the Ex Date.
- The gap between the Ex Date and the Record Date is **one business day less than the standard settlement cycle**.

## Timetable Examples

### T+2 Settlement Cycle

- **Ex Date:** One business day before the Record Date
- **Record Date:** Two business days after trade date
- **Payment Date:** As scheduled by the issuer

### T+1 Settlement Cycle

- **Ex Date:** Same day as the Record Date
- **Record Date:** One business day after trade date
- **Payment Date:** As scheduled by the issuer

## Key Takeaways

- The **Ex Date** is set as the settlement cycle minus one business day.
  - In **T+2**, Ex Date is one day before Record Date.
  - In **T+1**, Ex Date and Record Date are the same day.
- Accurate entitlement determination depends on both the settlement cycle and market standards.

## Key Dates: Last Trading Date in a Mandatory Reorg

A **mandatory reorganisation** is a type of corporate action initiated by the issuer of a security that **automatically affects all holders of the security**, without requiring any action or choice from the shareholders. The terms and outcome of the event are predetermined, and all eligible holders are subject to the changes. The **last trading date** is the final day on which the affected security can be traded with entitlement to participate in the reorganisation event.

### Definition: Last Trading Date in a Mandatory Reorg

#### Last Trading Date:

The date at which the securities to be reorganised will cease to be tradable.

- If you purchase the security **on or before** this date, you will be eligible for the reorganisation event (e.g., receive new shares, cash, etc.).
- If you purchase **after** this date, you will **not** be entitled to the benefit.
- For example in a T+2 environment, buying shares two business day before the Record Date, making the buyer eligible for the distribution. If the trade fails to settle, the buyer remains entitled to the proceeds.
- **Record Date:**  
The date set by the Issuer on which the rights flowing from the securities, including the right to participate in a Corporate Event, shall be determined, based on the settled positions struck in the books of the Issuer (I)CSD or other first intermediary by book-entry at the close of its business and/or register.
- **Payment Date:**  
The date on which the Payment is due
- The gap between the Last Trading Date and the Record Date is **one standard settlement cycle**.

## Timetable examples

### T+2 Settlement Cycle

- **Last Trading Date:** One standard settlement cycle before the Record Date (record date minus 2 business days)
- **Record Date:** Two business days after the Last Trading Date
- **Payment Date:** As scheduled by the issuer, preferably one business after the Record Date.

### T+1 Settlement Cycle

- **Last Trading Date:** One standard settlement cycle before the Record Date (record date minus 1 business days)
- **Record Date:** One business day after the Last Trading Date
- **Payment Date:** As scheduled by the issuer, preferably one business after the Record Date.

## Key Dates: Last Trading Date, Buyer Protection Date and Market Deadline Date in an Elective Event.

An **elective event** (also known as a **voluntary or mandatory with options corporate action**) is a type of corporate action initiated by the issuer where **security holders are given a choice** regarding how their holdings will be affected. Shareholders must actively respond or instruct their custodian/intermediary if they wish to participate in the event; otherwise, a default option is usually applied. The **last trading date** (also referred to as the Guaranteed Participation Date) is the final day on which the affected security can be traded with entitlement to participate in the reorganisation event. The **buyer protection date** is the deadline for

buyers of securities to send their corporate action election to their trading counterparty informing them of their decision should the trade fail to settle on time. The **market deadline date** is deadline set by the Issuer / Issuer Agent as the last date and time for direct market participants to inform the Issuer / Issuer Agent of the shareholders decision.

## Definitions

**Last Trading Date:** The date at which the securities to be reorganised will cease to be tradable.

**Guaranteed Participation Date:** Last date to buy the Underling Security with the right attached to participate in an Elective Corporate Event.

**Buyer Protection Deadline Date:** Process whereby a buyer who has yet to receive the Underlying Securities of an Elective Corporate Event, instructs the seller in order to receive the outturn of their choice.

**Market Deadline Date:** Date and time that the Issuer (or Offeror as the case may be) or Issuer (I)CSD has set as the deadline to send instructions for participation in the Corporate Event.

**Payment Date:** The date on which the Payment is due.

## Timetable Examples

### T+2 Settlement Cycle

- **Guaranteed Participation Date:** should precede the Buyer Protection Deadline by one Settlement Cycle.
- **Buyer Protection Deadline Date:** One business date prior to the Market Deadline Date
- **Payment Date:** As scheduled by the issuer, preferably one business after the Market Deadline Date.

### T+1 Settlement Cycle

- **Last Trading Date (Guaranteed Participation Date):** should precede the Buyer Protection Deadline by one Settlement Cycle.
- **Buyer Protection Deadline Date:** the business date prior to the Market Deadline Date.
  - **Please note**, the buyer protection deadline can only be one business prior to the market deadline, where the last trading date in a T+1 settlement cycle is two business days prior to the market deadline.
- **Market Deadline Date:** One standard settlement cycle + 1 business day **after** the Last Trading Date (Guaranteed Participation Date)

- **Payment Date:** As scheduled by the issuer, preferably one business day after the Market Deadline Date.

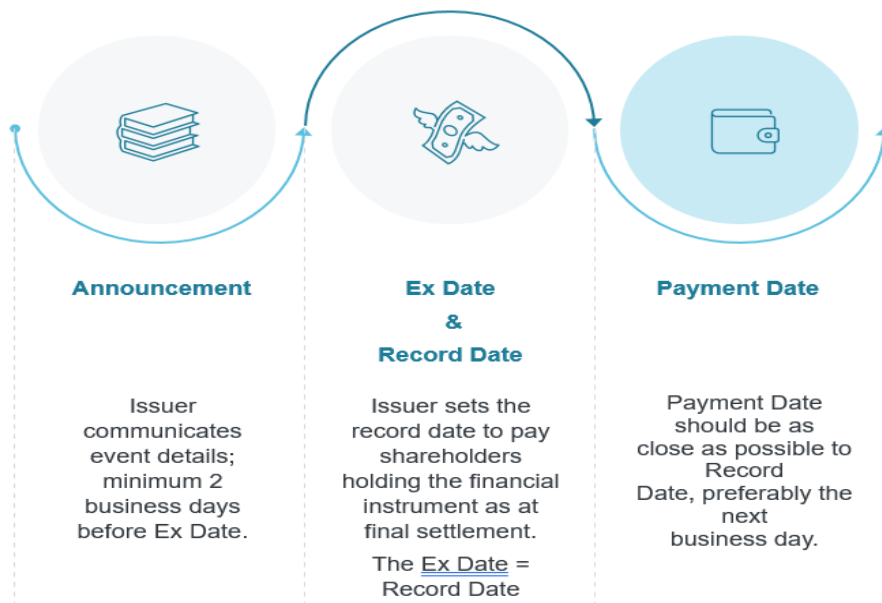
It is important to note the timetables ‘today’ are not in line with the **Market Standards for Corporate Events Processing**. The above timetable should be adhered to in a T+1 settlement cycle.

### 3. 7.3. Key implementation factors

#### Key dates for distributions

For distributions, the **Market Standards for Corporate Actions Processing** stipulate that the gap between the ‘ex-date’ and the ‘record date’ is one business day less than the standard settlement cycle. In a T+1 environment, this means that there is **no longer one business day between the ‘ex-date’ and the ‘record date’**. In a T+1 environment the ‘ex-date’ (which begins at the start of the day) and the ‘record date’ (which is a snapshot taken at the end of the day) must be on the same day as illustrated below. This means **all distribution event types will have adjust and all CSDs will have to ensure these dates are adhered to**.

Figure 4: Ex date and record date in T+1



**CSDs in Europe must be able to raise market claims regardless of the trade settlement cycle** on the transaction. A market claim is a process to reallocate the proceeds of a distribution to the contractually entitled party. **Harmonised automated workflows for the processing of market claims should be implemented in view of T+1.**

The following illustration provides a high level summary of the scenario's and the expected out come for Equities, regardless of the transaction type.

Scenario	Scenario 1	Scenario 2	Scenario 3
<b>Asset Class</b>	Equity	Equity	Equity
<b>Type of Event</b>	Mandatory Distribution (cash/stock)	Mandatory Distribution (cash/stock)	Mandatory Distribution (cash/stock)
<b>Trade Date</b>	Before Ex Date	Before Ex Date	On Ex Date
<b>ISD (Intended Settlement Date)</b>	On or before Record Date	After Record Date	On Record Date
<b>Cum/Ex Indicator</b>	Cum / Blank	Cum / Blank	Ex / Blank
<b>Opt Out Indicator</b>	Blank	Blank	Blank
<b>Settled by COB Record Date</b>	No	No	Yes
<b>Subject to CSD Detection for Market Claims?</b>	Yes	Yes	Yes
<b>Will a Market Claim Transaction Be Raised?</b>	Yes	Yes	Yes
<b>Direction of Newly Created Transaction</b>	From seller to buyer	From seller to buyer	From buyer to seller
<b>Comments</b>	Seller will be paid the entitlement which they are not entitled to	Seller will be paid the entitlement which they are not entitled to	Buyer traded Ex, therefore not entitled to the entitlement

Scenario	Scenario 1	Scenario 2	Scenario 3	Scenario 4
<b>Asset Class</b>	Equity	Equity	Equity	Debt
<b>Type of Event</b>	Mandatory Distribution (cash / stock)	Mandatory Distribution (cash / stock)	Mandatory Distribution (cash / stock)	Income Payment
<b>Trade Date</b>	Before Ex Date	Before Ex Date	On Ex Date	Before Record Date
<b>ISD (Intended Settlement Date)</b>	On or before Record Date	After Record Date	On Record Date	On or after Record Date
<b>Opt Out Indicator</b>	Blank	Blank	Blank	Blank
<b>Settled by COB Record Date</b>	No	No	Yes	No
<b>Subject to CSD Detection for Market Claims?</b>	Yes	Yes	Yes	Yes
<b>Will a Market Claim Transaction be raised?</b>	Yes	Yes	Yes	Yes
<b>Direction of Newly Created Transaction</b>	From seller to buyer	From seller to buyer	From buyer to seller	From seller to buyer
<b>Comments</b>	Seller will be paid the entitlement which they are not entitled to	Seller will be paid the entitlement which they are not entitled to	Buyer traded Ex, therefore they are not entitled to the entitlement	Seller will be paid the entitlement which they are not entitled to

T+1 shortens the processing window for corporate events, making automation essential to reduce risk and ensure timely instruction handling. For market claims, CSDs must efficiently identify eligible transactions and communicate claim creation and status to members, who in turn need to request amendments and relay information through intermediaries. While market claim generation is mostly automated 'today', reporting remains manual due to limited ISO message adoption.

New ISO messages (seev.050–seev.053) have been produced to automate these workflows, however widespread implementation by CSDs and Intermediaries is still lacking. **It is imperative that by October 2027 all European CSDs have an harmonised process for generating market claims using ISO messages.**

### **Automation of buyer protection processing for elective corporate events**

Buyer protection is a process whereby a buyer, who has yet to receive the underlying securities subject to an elective corporate action, instructs its Account Servicer in order to receive the corporate action proceeds of their choice. **Harmonised automated workflows for the processing of buyer protection instructions should be implemented in view of T+1.**

T+1 reduces the timeframe for processing of corporate events; with less time to process instructions, automation is imperative to reduce risk and to ensure instructions are processed on time. In the case of buyer protection, the timeframe to effect all necessary operational processes between 'Guaranteed Participation Date' and 'Buyer Protection Deadline' and 'Market Deadline' will be reduced by one day in a T+1 environment. For a trade executed on the 'Guaranteed Participation Date', the following processes may, or will, have to take place:

- i. **the settlement instructions have to be sent,**
- ii. **intermediaries have to receive them and identify that there is a pending corporate action for that security,**
- iii. **the intermediaries may have to send corporate action notifications through the custody chain and;**
- iv. **the buyer and intermediaries may have to process a buyer protection instruction, and/or an election instruction.**

For trades executed towards the end of the day on Guaranteed Participation Date, **these processes will have to take place in less than 24 hours.**

While today buyer protection instructions are mostly processed on a manual basis in Europe, in a T+1 environment **automated buyer protection functionality would ensure timely and efficient processing of buyer protection instructions.** This would reduce risk to the buyer and ensure investors are protected. By automating the process, the CSDs would transform the failing transaction into the desired outturn of the buyer. This process would also ensure these transactions are available for settlement at the earliest opportunity.

Prior to the implementation of the T+1 go live date, at a minimum CSDs should be utilising existing ISO15022 messaging and offering ISO20022 messaging at the appropriate time, in line with the Ami-SeCo ISO20022 Task Force recommendations'

### 3.7.4. Timeline and milestones

#### **Key Milestone 1: February 2026 - Harmonised rules for Transaction Management:**

Finalize the harmonized rules for transaction management (market claims, transformations, and buyer protection) and key dates to be applied by CSDs as of October 2027 in a single document by February 2026.

#### **Key Milestone 2: 31st March 2026 – CSD Implementation Plan**

CSDs to provide their implementation plans (including their key milestone plan) to the CEG by the end of March 2026. This will then be made public and available on the ECB website.

#### **Key Milestone 3: Monitoring Exercise Begins**

The CEG will start monitoring the plans and tracking the progress of each CSD.

## 3.8. SFT

### 3.8.1. Context

Securities Financing Transactions (SFTs), including repos and securities lending transactions, are integral to the functioning of the wider financial ecosystem. While SFTs are exempt from the CSDR T+1 requirement, in practice most SFTs will need to align with the cash market settlement cycle to support trading, collateralization and funding, and to avoid becoming a bottleneck for T+1 settlement. This means that most SFTs will have to settle within the cash market settlement cycle, so on a T+1 or even T+0 (same-day) basis, which means SFTs will be disproportionately impacted by T+1. Most of the recommendations set out in the Roadmap, especially around the need to further automate and standardise the post-trade process, are therefore at least as relevant for SFTs as they are for cash market transactions.

The SFT section in the Roadmap (section 4.8) includes five recommendations that apply specifically to SFTs. However, while these are important, there are numerous other recommendations in other sections of the Roadmap that are equally relevant for SFTs and important to consider. In fact, this has also been clearly reflected in the work of the SFT workstream established under the Industry Committee which had put forward 30 recommendations in total. These have been merged with the recommendations from other workstreams and can be found throughout the Roadmap (see fig 1. overview/table mapping).

Important examples include the return and recall framework for SFTs (TR-04) and automatic shaping (TR-05) in the trading section, as well as the use of various settlement optimisation tools and functionalities covered in the settlement section (ST-03). In addition, many of the more general recommendations around matching and confirmation, clearing and settlement are extremely relevant from an SFT perspective.

HLRM - High Level Roadmap - EU T+1 Recommendations:	
HLRM Phase:	HLRM Recommendation:
Trading Phase	TR-04 - Recall and Return Framework for SFTs
Trading Phase	TR-04.1 – Standardised recall request deadline
Trading Phase	TR-04.2 – Standardised return notification deadline
Trading Phase	TR-04.3 – Standardised return settlement deadline
Trading Phase	TR-04.4 – Adoption of ERCC best practice for termination of open repo
Trading Phase	TR-05 – Automatic shaping of settlement instructions
Matching & Confirmation	MC-04 – Establishment of Industry Taskforce to agree standards for SSI management and exchange
Matching & Confirmation	MC-05.1 – Pre-matching (securities lending)
Matching & Confirmation	MC-05.2 – Trade confirmations (repo)
Settlement Phase	ST-01.5 – Use of dynamic cash and stock forecasting tools
Settlement Phase	ST-01.6 – Use of Transaction type identifier in settlement instructions
Settlement Phase	ST-02.4 – SSS Closing: Explore the establishment of a DvP cutoff of 17:00
Settlement Phase	ST-03.3 – Establish Industry Taskforce to develop Partial Settlement Market Practice
Settlement Phase	ST-03.7 – Intermediaries use of ‘Hold & Release’
Settlement Phase	ST-03.12 – Auto-borrowing facilities
Settlement Phase	ST-03.14 – Auto-collateralisation facilities
SFTs	SF-01 – Further analysis of potential settlement optimisation for SFTs
SFTs	SF-02.1 – Pro-rata loan releases
SFTs	SF-02.2 – Triparty RQV collateral tools and logic-based models
SFTs	SF-03 – Notifications from buy-side to lending intermediaries of sales
SFTs	SF-04 – Same-day returns for securities lending transactions
SFTs	SF-05 – Automation of securities lending recalls and return instruction flows

Table 2: SFT Phase & Recommendation Mapping

### 3.8.2. Additional guidance on specific issues:

Following the publication of the Roadmap itself, there has been further discussion on a number of the recommendations that are relevant to SFTs, as well as other issues that have not been fully addressed in the Roadmap. This includes the three taskforces which were established by the Industry Committee after the publication of the Roadmap to address open items from the Roadmap. From an SFT perspective, all three taskforces covered aspects that are extremely relevant and the SFT community therefore actively participated in those discussions. From a repo and a securities lending perspective the following issues are worth highlighting, which are all expected to lead to additional industry guidance:

#### i. Auto-partialling:

- [Final Report of the Taskforce on partial settlement market practice](#)
- [Complementary guidance on auto-partialling in the ISLA Best Practice Handbook](#)

#### ii. SSIs and transaction type identifier

- [Final Report of the Taskforce on SSI market practice](#)
- Among the documents produced by the Taskforce, from an SFT perspective of particular note is the [Additional market practice on the use of transaction type identifiers](#).

### iii. SFT settlement optimisation

- [Final report of the SFT Settlement Optimisation Taskforce](#)
- There are still a few open questions related to the agreed ‘gating event’ which continue to be discussed. These are acknowledged and further explained in the final Taskforce report and are related to the ‘Identifier to allow parties to flag gating event eligibility’ (see point 3a) and the ‘Eligibility of CCP-cleared SFT transactions for the gating event’ (point 3c). Additional guidance on those points is expected to be released in due course and will be included in a future iteration of the Handbook.

### iv. Recall and Return framework for Securities Borrowing & Lending:

In a T+1 environment, recalls supporting sale trades should be initiated and settled early enough for the returned securities to be re-used within the same settlement day. The High-Level Roadmap (TR-04) sets out a recommended framework for recalls and returns. This has been further complemented by detailed industry best practice published by ISLA.

- [Complementary guidance in the ISLA Best Practice Handbook](#)

### v. Shaping (TR-05) (ongoing discussion)

The Roadmap sets out a clear recommendation (TR-05) calling for a wider (automatic) adoption of automatic shaping. This recommendation was proposed by the SFT workstream (following discussions with the trading workstream) and shaping is particularly relevant for SFTs, specifically repos given their typically large transaction size.

Recommendation TR-05 has raised questions in relation to the scope of the recommendation and the parties deemed responsible for implementing shaping. It is acknowledged that additional guidance and clarification is necessary as regards scope and the responsibility for implementing shaping across different trading scenarios. This is currently being developed and will be included in the next iteration of this Handbook.

## 2.8.3. Relevant industry best practices

In addition to the relevant recommendations in the High-Level Roadmap and the Handbook, the relevant industry associations for SFT markets are maintaining detailed best practice recommendations for their respective market (ICMA/ERCC for repo and ISLA for securities lending). Market participants should treat the guidance issued by the T+1 Industry

Committee and the industry best practice guides as complementary and mutually consistent sources. Where the Guides go into greater operational detail for repo and securities lending, firms should follow those practices in conjunction with the high-level recommendations set out here.

- [ERCC Guide to Best Practice in the European Repo Market](#) (March 2025)

*Note: ICMA is currently undertaking a comprehensive review of the ERCC's Guide to Best Practice in the European Repo Market to reflect the upcoming move to T+1 and to ensure consistency with the EU High-Level Roadmap as well as the respective recommendations published by the UK's Accelerated Settlement Taskforce. Resulting changes will be made available on the ICMA website in the course of 2026, although this is expected to be an ongoing process.*

- [ISLA Best Practice Handbook for Securities Lending](#) (updated on an ongoing basis)

## 4.9. Legal and Regulatory

### 4.9.1. Purpose

Under the EU T+1 Industry Committee set-up, the Legal and Regulatory workstream is charged with identifying potential roadblocks in legislation, both at national and EU-level, that can present challenges to the successful implementation of T+1 across the EU.

### 4.9.2. Objectives and considerations going forward

#### 4.9.2.1 Considerations at EU-level

Market participants should engage with their clients and counterparties, particularly those based outside the EU, to ensure a high-level of awareness of the relevant legal and regulatory changes described in the box below.

#### **Level 1 changes:**

EU public authorities have been highly engaged in the T+1 transition and in liaising with the wider industry via the Industry Committee. The European Commission, European Parliament, and Council of the EU have already agreed on key deliverables for the industry from a legal and regulatory perspective: amendments to CSDR Article 5 (2). The final version of the text has been voted and approved by the plenary of the European Parliament and published by the Council of the EU, and includes the following points:

- **Settlement cycle:** the settlement cycle in the EU will be shortened from two days (so-called "T+2") to one ("T+1").
  - **SFTs:** an exemption shall apply to SFTs that are documented as single transactions composed of two linked operations.
  - **Suspension of cash penalties:** the Commission shall first monitor market developments, volumes of settlement fails, and readiness off the industry, before considering any adjustment to the cash penalties scheme. Any suspension shall be temporary and proportionate.
    - **Timing:** these changes will be effective from 11 October 2027.

It is crucial that market participants are aware that these changes are legally binding and therefore require timely preparation and adjustment of processes, in line with recommendations from the Industry Committee.

#### **Level 2 changes:**

During the transition period, EU authorities are expected to introduce new level 2 rules, such as regulatory technical standards (RTS), that will be enforceable against all market participants. This includes the recently published amendments to the RTS on Settlement Discipline by ESMA, which contains key changes to T+1-related processes and follows-up on recommendations from the Industry Committee's High-level Roadmap.

#### **Level 3 changes:**

Depending on the changes adopted in the Commission Delegated Regulation, ESMA expects to publish in Q1 2026 a consultation paper on amendments to existing ESMA Guidelines on standardised procedures and messaging protocols under Article 6(2) of CSDR, and to publish final guidelines in Q3 2026.

*Table 3 Legal and Regulatory changes*

#### **4.9.2.2 Considerations at national-level:**

No significant regulatory hurdles that could require action ahead of the T+1 transition have been identified at national level across EU Member States. Nevertheless, the Legal and Regulatory workstream has agreed to continue monitoring the regulatory landscape in order to identify potential national-specific barriers that would require law modifications throughout the T+1 implementation period. We therefore invite market participants, FMIs, and other stakeholders from the different Member States to:

1. Consider national legal and regulatory implications to any process changes related to T+1.
2. Inform the T+1 Industry Committee, via the Legal and Regulatory workstream, in case any of these national legal and regulatory specificities merits further analysis and monitoring with regards to any potential changes to the respective national legal frameworks.

#### **4.9.2.3 Considering shortening the SEPA Direct Debit Core**

Despite the settlement of fund units and shares being exempted from the T+1 requirements, there is a desire to avoid the funding gap and performance disadvantages for fund and pension investors.

In the future, to this end, fund and securities levels could bring forward the SEPA direct debit to D-0. This would allow retail funds, e.g., for savings plan investors, to be collected on T+1. ensure synchronization.

## 5. Conclusion

The transition to a T+1 securities settlement cycle in the European Union represents one of the most significant post-trade transformations undertaken by European markets in recent decades. Unlike more homogeneous jurisdictions, the EU's transition must accommodate a highly diverse market structure, spanning multiple currencies, infrastructures, legal frameworks, and settlement systems. This complexity reinforces the need for a coordinated, pragmatic, and industry-wide approach.

This Handbook provides a structured and practical guide to support market participants in navigating that transition. Building on the High-Level Roadmap published by the EU T+1 Industry Committee, it translates the recommendations into actionable operational guidance across the full trade lifecycle - from trading and matching through clearing, settlement, asset management, FX, corporate events, SFTs, and legal and regulatory considerations. The recommendations outlined herein are designed to promote consistency, reduce operational risk, and safeguard settlement efficiency in a significantly compressed operating environment.

The Handbook also recognizes that successful implementation cannot be achieved by individual firms acting in isolation. Close collaboration across market participants, financial market infrastructures, service providers, and regulators will be critical. Early engagement, transparent communication, and coordinated testing will help ensure that dependencies across the settlement chain are addressed in a timely manner and that operational readiness is achieved well in advance of the October 2027 implementation date.

Finally, while this Handbook reflects the current state of industry analysis and agreed recommendations, it is not static. As further work is completed by the EU T+1 Industry Committee and its technical workstreams, additional guidance and market practices will continue to be developed and published. Market participants are encouraged to actively engage in these efforts and to use this Handbook as a reference as they progress on their individual and collective journeys toward T+1.

Through collective commitment, disciplined execution, and continued collaboration, the European market can achieve a successful transition to T+1 - enhancing settlement efficiency, reducing risk, and reinforcing the robustness and global competitiveness of EU capital markets.

## 6. Appendix:

### 6.1. Table of Acronyms:

Acronym	Meaning
<b>AIF / AIFM</b>	Alternative Investment Fund / Alternative Investment Fund Manager
<b>AMI</b>	Advisory Group on Market Infrastructures
<b>APAC</b>	Asia-Pacific region
<b>BP</b>	Buyer Protection (Corporate Actions)
<b>CCP</b>	Central Counterparty
<b>CEG</b>	Corporate Events Group (AMI-SeCo)
<b>CET</b>	Central European Time
<b>CSD</b>	Central Securities Depository
<b>CSDR</b>	Central Securities Depositories Regulation
<b>CLS</b>	Continuous Linked Settlement (FX PvP system)
<b>CM</b>	Clearing Member
<b>CZK</b>	Czech Koruna
<b>DKK</b>	Danish Krone
<b>DTCC</b>	Depository Trust & Clearing Corporation
<b>DvP</b>	Delivery versus Payment
<b>EEA</b>	European Economic Area
<b>ERCC</b>	European Repo and Collateral Council
<b>ESMA</b>	European Securities and Markets Authority
<b>ETF</b>	Exchange-Traded Fund
<b>EU</b>	European Union
<b>EUR</b>	Euro
<b>Ex-Date</b>	First trading day without entitlement
<b>FMI</b>	Financial Market Infrastructure
<b>FoP</b>	Free of Payment
<b>FX</b>	Foreign Exchange
<b>GBP</b>	British Pound Sterling
<b>GFXC</b>	Global Foreign Exchange Committee
<b>ICMA</b>	International Capital Market Association
<b>ICSD</b>	International Central Securities Depository
<b>INTR</b>	Interest (Corporate Action type)

<b>ISD</b>	Intended Settlement Date
<b>ISLA</b>	International Securities Lending Association
<b>ISO</b>	International Organization for Standardization
<b>ISK</b>	Icelandic Krona
<b>MT / MX</b>	SWIFT Message Types (MT = ISO 15022; MX = ISO 20022)
<b>NAV</b>	Net Asset Value
<b>NCB</b>	National Central Bank
<b>NTS</b>	Night-Time Settlement (T2S)
<b>OMS</b>	Order Management System
<b>OTC</b>	Over-the-Counter
<b>PLN</b>	Polish Zloty
<b>POA</b>	Power of Attorney (for CCP instruction models)
<b>PSAF / SAFE</b>	Place of Safekeeping
<b>PSET</b>	Place of Settlement
<b>PvP</b>	Payment versus Payment
<b>RD</b>	Record Date
<b>RON</b>	Romanian Leu
<b>RTS</b>	Regulatory Technical Standards
<b>SA</b>	Settlement Agent
<b>SD</b>	Settlement Day
<b>SEPA</b>	Single Euro Payments Area
<b>SFT</b>	Securities Financing Transaction
<b>SLA</b>	Service Level Agreement
<b>SMPG</b>	Securities Market Practice Group
<b>SSS</b>	Securities Settlement System
<b>ST</b>	Settlement Theme (Roadmap categorization)
<b>STP</b>	Straight-Through Processing
<b>T+1</b>	Trade Date plus One Business Day
<b>T+2</b>	Trade Date plus Two Business Days
<b>T2S</b>	TARGET2-Securities
<b>TA</b>	Transfer Agent
<b>TD</b>	Trade Date
<b>TR</b>	Trading Rule / Technical Recommendation (contextual in Handbook)
<b>UCITS</b>	Undertakings for Collective Investment in Transferable Securities
<b>UK</b>	United Kingdom
<b>USD</b>	United States Dollar

<b>WS</b>	Workstream
<b>ZAR</b>	South African Rand

The contents of this document are intended solely for general information and do not constitute legal, financial, investment, tax, regulatory, business or other professional advice.  
No guarantees, representations or warranties are made regarding the accuracy, completeness, suitability or timeliness of the content. Unless explicitly stated otherwise, the views expressed do not represent official positions of Members or Observers of the EU T+1 Industry Committee but rather reflect the common perspective of the Industry Committee.  
Readers must consult qualified professionals before acting on any information provided. Contributors, affiliated entities and members of the Committee disclaim any obligation to update the content and accept no liability arising from or relating to the use of this document or its contents. Your receipt of this document is subject to the Terms of Use which are applicable to the EU T+1 Industry Committee website (available at <https://www.eu-t1.eu/terms-of-use>)